

Weatherproof String Lights with 10 Dropped Sockets, 33-Foot, Black - With Bulbs



Product Description:

Create lasting memories to be cherished forever with our outdoor string light! Give your wedding or anniversary party the decorative flair it deserves.

Ideal for everyday use. Light up your porch, deck, yard, garden, or pool area with the perfect fixture. Industrial grade outer rubber construction can endure years of inclement weather.

Industry leading 18-gauge wiring allows you to connect up to 33 strands. Each socket and bulb on every strand are inspected for performance before it leaves our factory.

Steel cables can be threaded through the built-in loops above each socket to support and position our light strings.

SPECS:

- Includes 10 PCS S14 LED filament bulbs (1.5watts each)
- 10 Sockets with Built-in Hanging Loops
- Bulb Spacing: 3.2 feet (98cm) between sockets
- Socket Type: E26 with Medium base
- Total Length (end to end): 33 ft(10M)
- Length from plug to 1st bulb: 3.3ft (100cm)
- Length from male plug to the last bulb: 0.66ft (20cm)
- Maximum strings per run: Connect up to a maximum of 33 strings with 1.5 watt bulbs
- Maximum Wattage per Socket / per Light String / per Run of connected strings: 1.5 / 15 / 500
- UL Approved cable for Outside or Indoor Use
- Dimmer: No

Product Information

Wire length	33 feet (10M)	Wire info	18AGW SJTW
Socket distance	3.2 feet(98cm)	IP rating	IP65
Cap type	E26	CCT	2700K
Input voltage	120V 60Hz	Temperature limit	-20~40°C
Total wattage	15W	Beam angle	360°
Luminous/bulb	150LM	Package	37.5*22.5*13cm/ 2.1KG



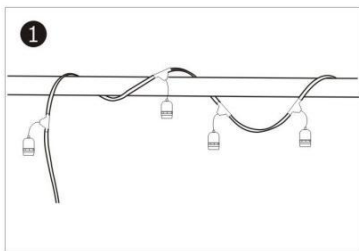
Application:



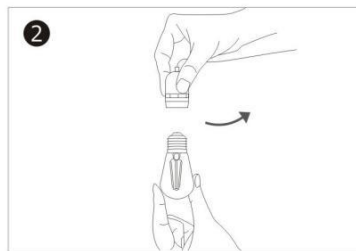
INSTALLATION SUGGESTIONS:

Ensure all bulbs are removed from sockets, and sockets are empty. Install light string with the empty sockets in your location. Once strand is secured, screw bulbs into empty sockets. To prevent breakage during windy conditions, install strands far apart enough so bulbs don't collide into each other or anything else. To prevent bulbs from breaking upon impact, move strands slowly during installation.

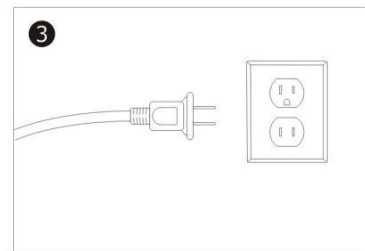
Installation



1
Install cable with the empty sockets in desired location, such as backyards, gazebos, patios, gardens and more.



2
Screw bulbs into empty sockets one by one.



3
Connect the AC plug to the power source and the lights are on.

Packaging:

